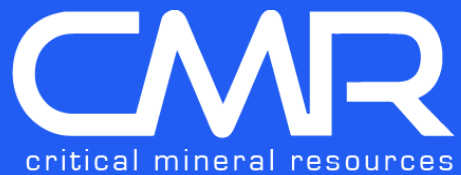


CRITICAL MINERAL RESOURCES PLC

Corporate Presentation – Q2 2026



DISCLAIMER

The sole purpose of this investor presentation, talks given by presenters, the information communicated during any delivery of the presentation and any question and answer session and any document or material distributed at or in connection with the presentation (together, the "Presentation") is to provide information on Critical Mineral Resources Plc and its subsidiary companies ("CMR" or "the Company") in relation to a proposed placing of new ordinary shares (the "Placing Shares") in the capital of the Company.

This Presentation is strictly private and confidential and is intended solely for the information of the recipient. It is not an invitation for public subscription and should not be reproduced or circulated or used for any purpose. This Presentation is made available to you strictly on the basis that the information contained within this Presentation constitutes confidential information, and accordingly this Presentation, and all confidential information provided, are returnable to CMR. Notice is given that: **1.** The information relating to the Company contained herein has been provided by the Directors and has not been approved by the Financial Conduct Authority. **2.** In no circumstances will the Directors, the Company, nor the Company's broker from time to time, or any of their respective, affiliates, representatives, partners, directors, officers, employees, advisers or agents (collectively "the Relevant Parties") be responsible for any of the information in this Presentation, including any forecasts and details on the market. These are supplied as a guide only and do not purport to contain all the information that an interested party may require. By accepting this Presentation, the recipient acknowledges that it will be solely responsible for making its own investigations, including the costs and expenses incurred, and forming its own view as to the condition and prospects of the Company and the accuracy and completeness of the statements contained herein. **3.** This Presentation includes certain statements, estimates and projections provided by the Company with respect to its anticipated future performance. Such statements, estimates and projections reflect various assumptions concerning anticipated results and are subject to significant business, economic and competitive uncertainties and contingencies, many of which are or may be beyond the control of the Company. Accordingly, there can be no assurance that such statements, estimates and projections will be realised. The actual results may vary from those projected, and those variations may be material. No representations are or will be made by any party as to the accuracy or completeness of such statements, estimates and projections or that any projection will be achieved. **4.** None of the Relevant Parties has any authority to make or give any representation or warranty whatsoever in relation to the business or prospects of the Company and makes no such representation or warranty. **5.** The information contained herein and any further information (whether written, electronic or oral) relating to the Company supplied by any of the Relevant Parties is, and will be, supplied on the condition that none of the Relevant Parties or any other person whatsoever is liable for any error, omission, or inaccuracy therein nor for any loss or damage sustained by an investor of the business placing reliance on such information, including any error or omission or inaccuracy resulting from any negligent act or omission of any of the Relevant Parties or any other person. No party accepts any responsibility or gives any undertaking to provide further information, including any information required to correct any earlier inaccuracy or error. **6.** The information contained in the Presentation does not, and will not, form any part of a contract or offer for sale or to invest. Furthermore, it does not constitute an offer capable of acceptance and no binding commitment may be entered into on the basis of the information contained herein. **7.** Any decision to invest into the Company must be made solely on the basis of the information contained in this Presentation. **8.** None of the Relevant Parties undertake to accept any proposal and they reserve the right to accept or reject any proposal for any reason. They reserve the right to negotiate with one or more potential parties at any time and to enter into a definitive agreement for a transaction involving the Company without prior notice to the recipient of this Presentation or other potential investors. They also reserve the right to terminate, at any time, further participation in the investigation and proposed process by any party, to modify any of the rules or procedures set forth herein or any other procedures without prior notice or assigning any reason therefore or to terminate the process contemplated hereby. They reserve the right to take any action, whether in or out of the conduct of the Company's businesses, or the process contemplated by this Presentation. **9.** Neither the receipt of this Presentation nor any information (whether written, electronic or oral) made available in connection with the proposed investment in the Company constitutes, or is to be taken as constituting, the giving of investment advice by any of the Relevant Parties. **10.** This Presentation is directed only at persons who are persons having professional experience in matters relating to investments or are persons falling within Article 49(2)(a) to (d) ("high net worth companies, unincorporated associations, etc") of the Financial Services and Markets Act 2000 (Financial Promotion) Order 2005 (all such persons together being referred to as "relevant persons"). This Presentation must not be acted on or relied on by persons who are not relevant persons. Any investment or investment activity to which this communication relates is available only to relevant persons and will be engaged in only with relevant persons. Each recipient of this Presentation ("Recipient") represents and warrants that he or it is a relevant person and agrees to inform himself or itself about and observe all applicable legal requirements in the UK and/or in the jurisdiction(s) in which he or it is situated. Any Recipient who is not a relevant person should return this document to the Company and should not act upon it. **11.** This Presentation should not be considered as a recommendation by any of the Relevant Parties to invest in the Company, and recipients interested in investing in the Company are recommended to seek their own independent financial, legal and other advice from persons authorised and specialising, as necessary, in investments of the kind in question. Recipients should be aware that any investment activity may expose them to a risk of losing the property invested. **12.** This Presentation is being supplied to you for your own information and may not be distributed, published, reproduced or otherwise made available to any other person, in whole or in part, for any purposes whatsoever. In particular, they should not be distributed to or otherwise made available to persons with addresses in Canada, Australia, Japan, the Republic of South Africa or the United States, its territories or possessions or in any other jurisdiction outside of the United Kingdom where such distribution or availability may lead to a breach of any law or regulatory requirements. **13.** Recipients of this Presentation in jurisdictions outside the UK should inform themselves about and observe all applicable legal requirements in their jurisdictions. In particular, the distribution of this Presentation in certain jurisdictions may be restricted by law and, accordingly, recipients represent that they are able to receive this Presentation without contravention of any unfulfilled registration requirements or other legal restrictions in the jurisdiction in which they reside or conduct business.

BOARD OF DIRECTORS



**GÉRAUD
MOUSARRIE**

CHAIRMAN

Géraud has extensive resources experience across North and West Africa including at BP and Rio Tinto.



**CHARLES
LONG**

CEO

Charlie is a mining specialist with industry and financial services sector experience.



**NOUREDDINE
SABRAOUI**

COO

Noureddine is an experienced field geologist, mine manager and business owner.



**RUSSELL
THOMSON**

NED

Russell Thomson is an accountant with over 30 years' experience in mining, construction, engineering, rail and energy.



**RUSSELL
TUCKER**

NED

Russell Tucker brings over 10 years of experience in mining investment banking, project management and Investing.

INVESTMENT CASE

01 _____

Strategy to become a mid-sized north African copper and base metals producer

First asset is copper-silver discovery* at Agadir-Melloul

02 _____

Earning 60% through staged development expenditure

District-scale sediment-hosted copper system with strong expansion potential

03 _____

Exploration Target 20 - 25 Mt @ 1.2% CuEq**

Maiden JORC Resource targeted for Q3-2026

04 _____

Internal resource model based on 50 x 100m drilling underpins Initial Mine development

Aiming for 2027 construction

05 _____

Agadir Melloul to catapult CMR to UK market and Moroccan prominence

06 _____

Active acquisition strategy to add to Agadir Melloul permits and buy one or more near-term production assets in Morocco

(*) confirmed by trenching and maiden diamond core drilling

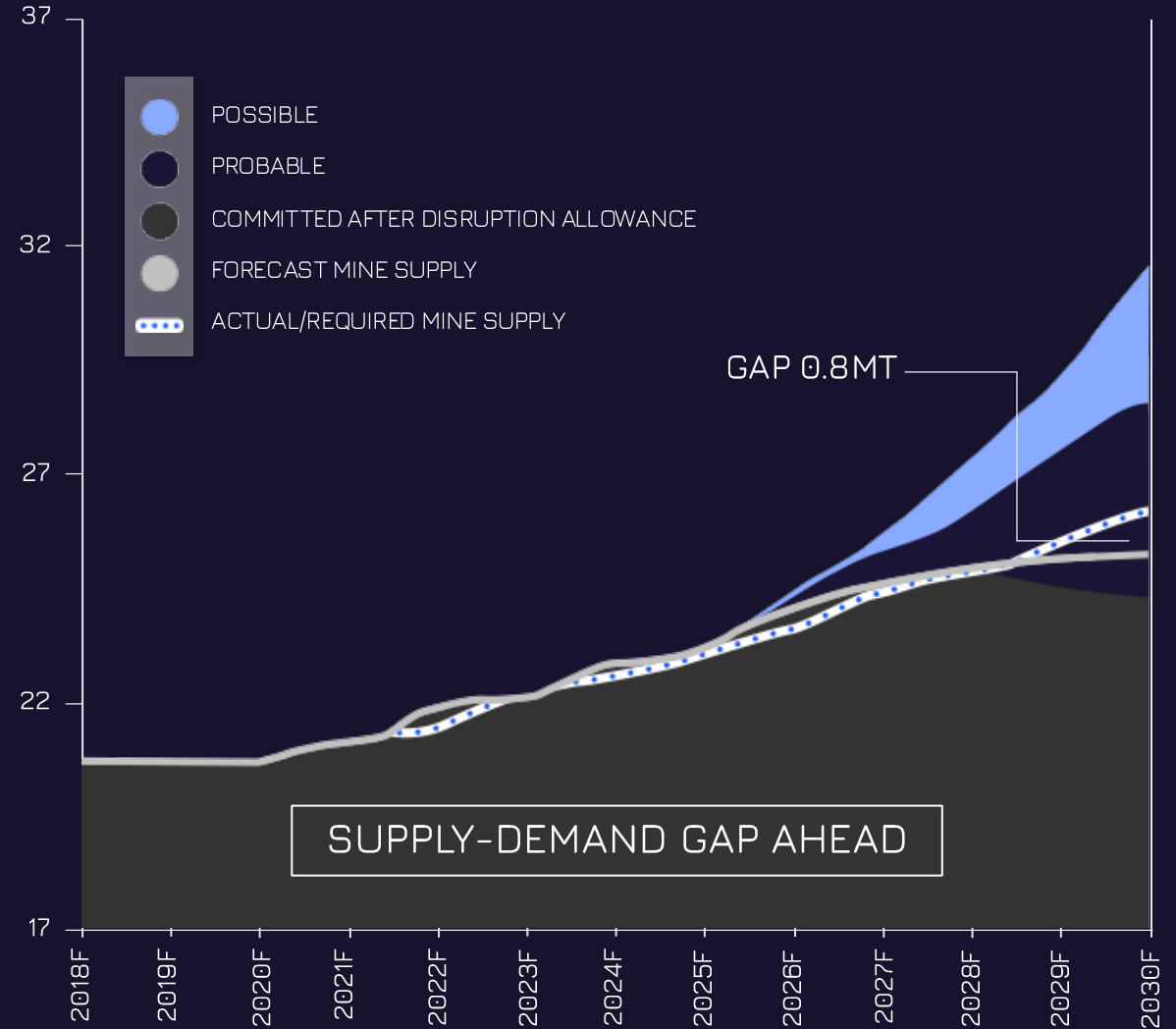
(**) Exploration targets are conceptual in nature and grade depends on results and cut-off grade calculations



MOROCCO'S STRONG COPPER OUTLOOK

- Favourable jurisdiction – No.2 in Africa (Fraser Institute)
- Presence of large-scale copper deposits confirmed (Tizert: 130mt @ c.0.9% copper) 55km from AgMe
- Well-established mining industry historically focused on phosphate, cobalt and manganese but diversifying
- Expected to benefit from EU CRM initiative, offering attractive supply for EU smelters and refiners (e.g. Belgium, Spain, Italy, Germany)
- Expanding mid-stream, downstream and industry infrastructure - multiple world class factories, ports and economic zones (e.g. Kenitra)
- Major players investing in Morocco's circular economy (e.g. Samta Metals & Alloys aims to recycle aluminium and copper from 2026)

WORLD COPPER MINE SUPPLY (Mt)



Source: ICSG, WoodMac, CRU, SMM, Bloomberg NEF, Ember, Rho Motion, LMCA, Macrobond, company reports, Macquarie Strategy, Mar '25

AGADIR MELLOUL

INTRODUCTION

COMPANY MAKING SEDIMENTARY COPPER DEPOSIT

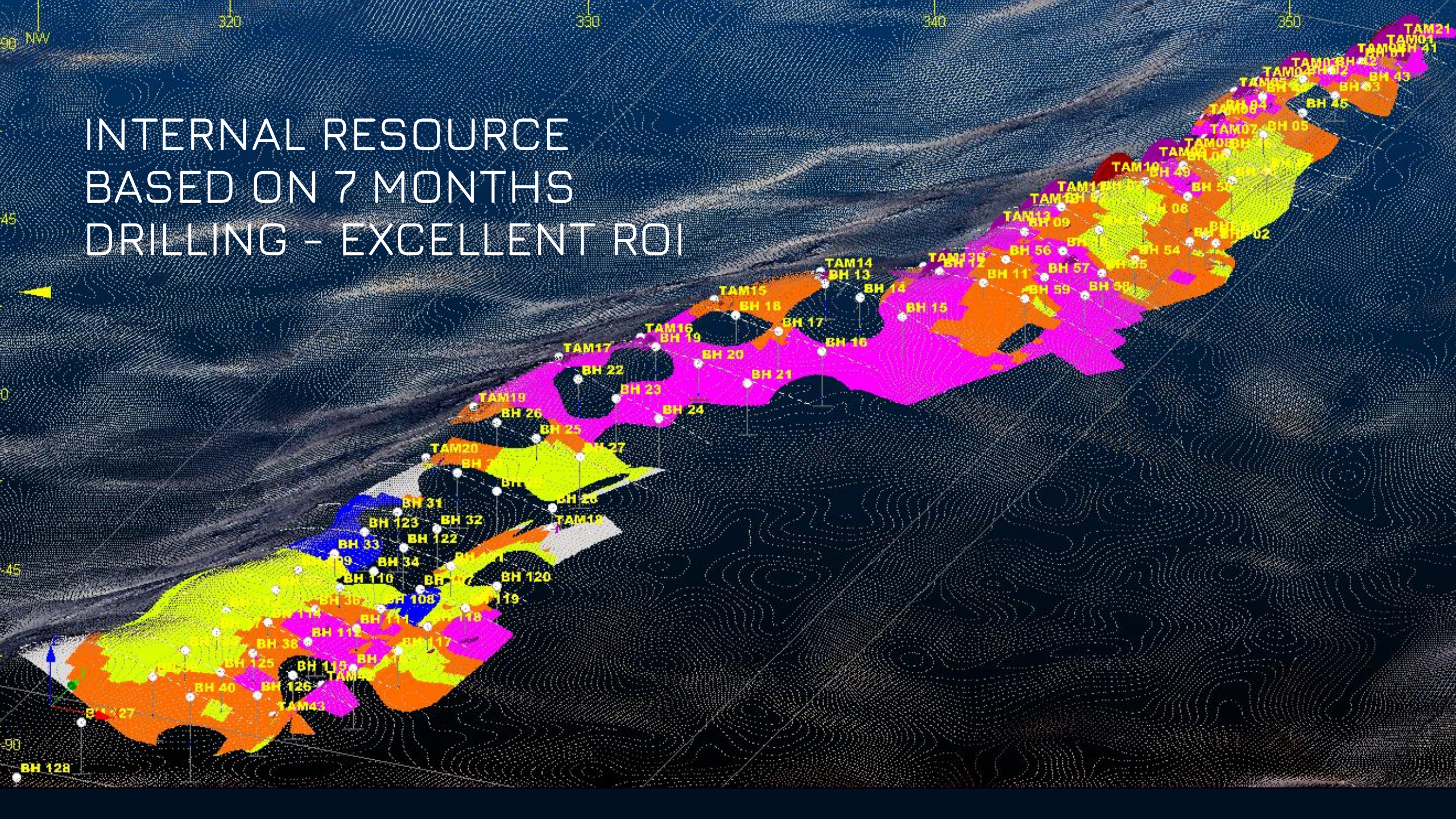
- AGADIR-MELLOUL
- ⚒ TIZERT
- ⚒ ZGOUNDER / AYA GOLD & SILVER
- ⚒ OTHER MINES

AGADIR



50 100km

INTERNAL RESOURCE
BASED ON 7 MONTHS
DRILLING - EXCELLENT ROI



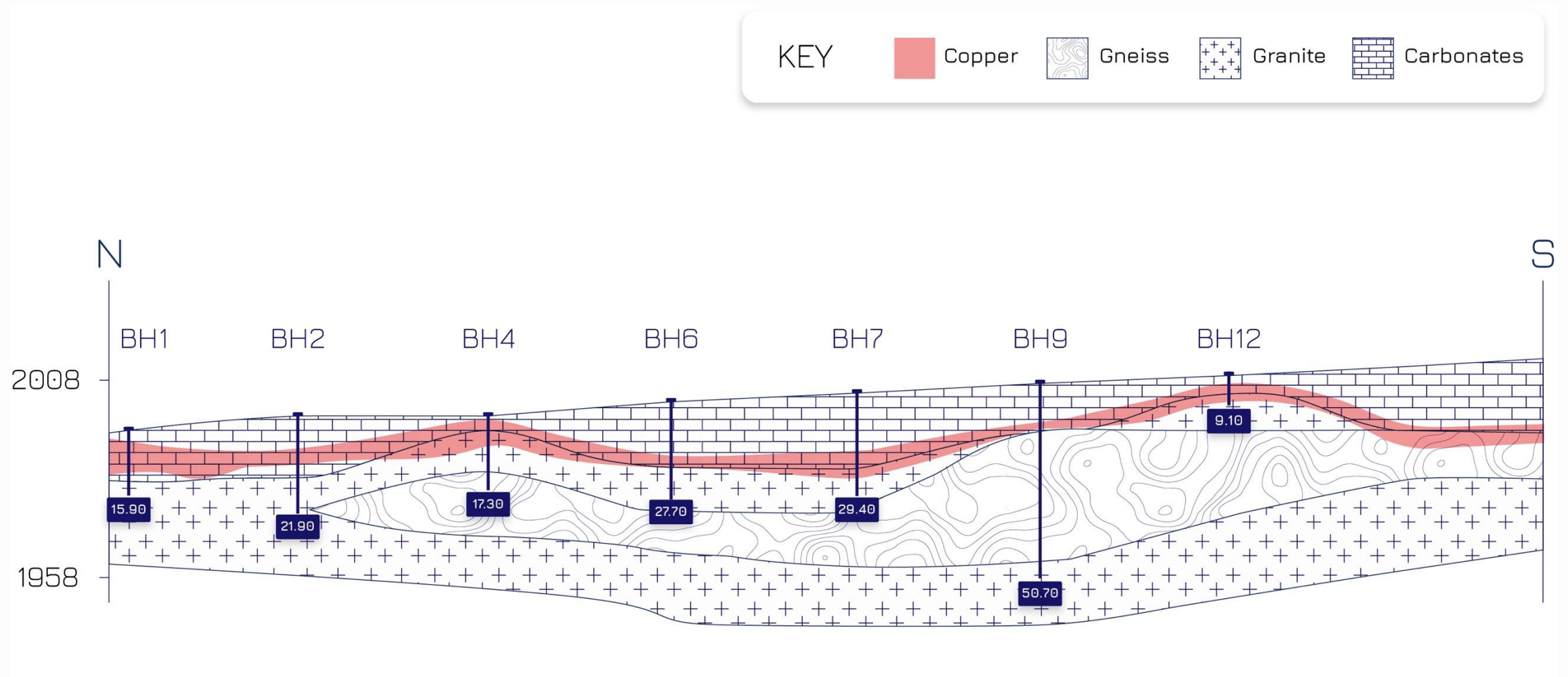
DRILL RESULTS: COPPER - SILVER

ALL MINERALISATION NEAR SURFACE

No.	Length (m)	Cu (%)	Ag (g/t)
BH01	5.8	1.12	19.0
BH04	2.5	0.85	4.0
BH06	2.0	1.30	-
BH07	1.3	0.98	-
BH09	3.0	0.75	-
BH12	4.0	1.04	-
BH35	7.5	0.97	-
BH36	4.7	1.48	-
BH38	4.7	1.03	-
BH43	3.0	1.10	-
BH45	1.6	1.10	-
BHR01	6.0	1.40	31.0
BH11	2.0	0.95	1.1
Inc.	3.0	1.49	1.0
BH15	1.5	1.32	20.31
BH17	1.7	0.92	1.78

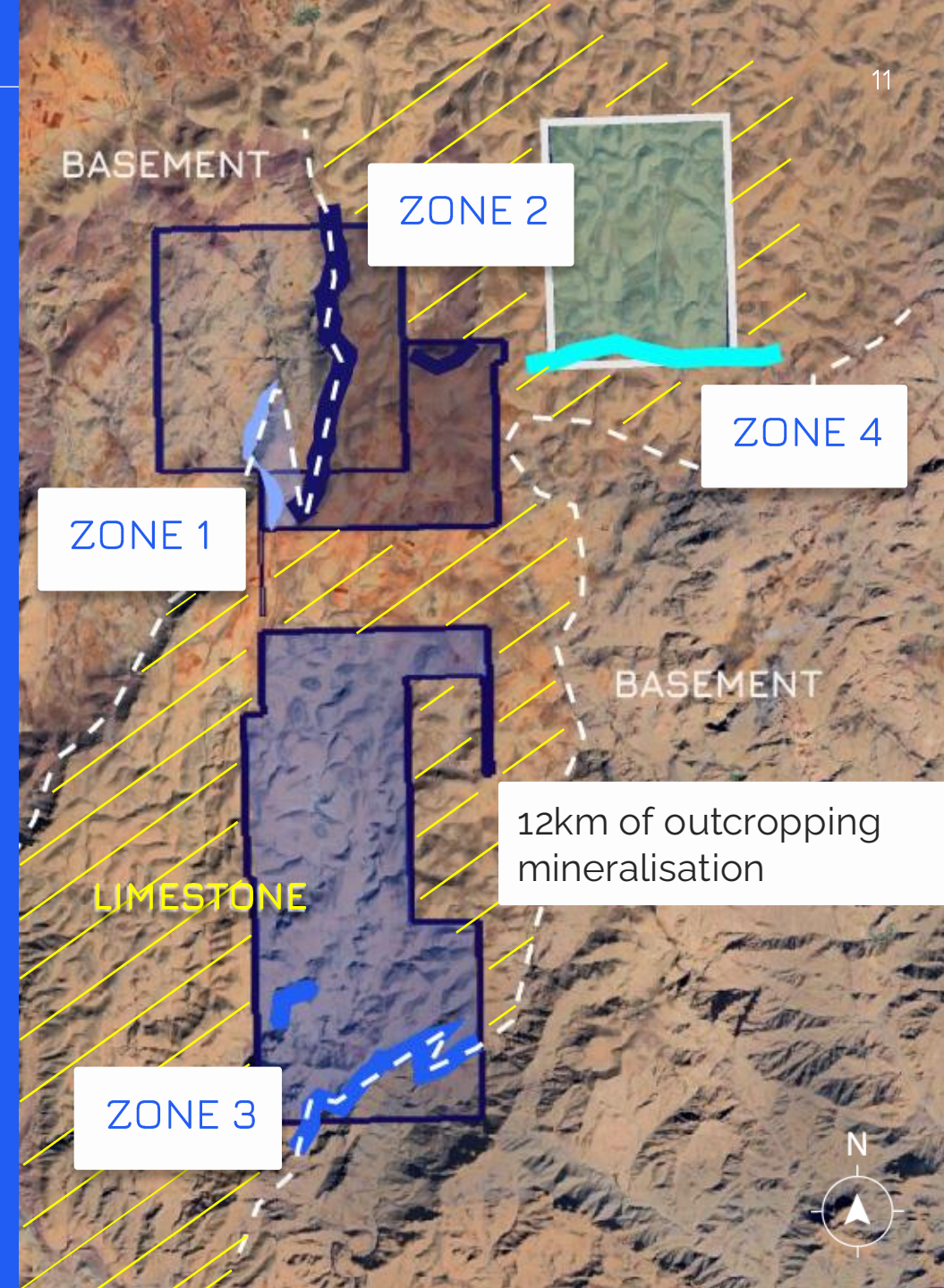
No.	Length (m)	Cu (%)	Ag (g/t)
BHR09	10.0	1.10	20.0
BHR10	3.0	0.82	12.0
BH100	5.0	1.20	1.42
Inc.	3.0	1.64	1.85
BH107	3.0	1.04	1.22
BH108	4.0	1.03	1.0
BH111	7.0	1.06	1.0
BH114	7.0	0.91	0.9
BH119	2.5	1.40	8.6
BH56	4.0	1.60	3.10
BH58	1.9	1.12	5.75
BH155	1.7	1.6	3.1
BH156	3.0	1.12	5.75
BH157	9.7	0.74	4.46
Inc.	2.2	1.05	3.50
and	3.6	0.98	6.22

ZONE 1 NORTH – SHALLOW, TABULAR COPPER MINERALISATION



INITIAL PORTFOLIO

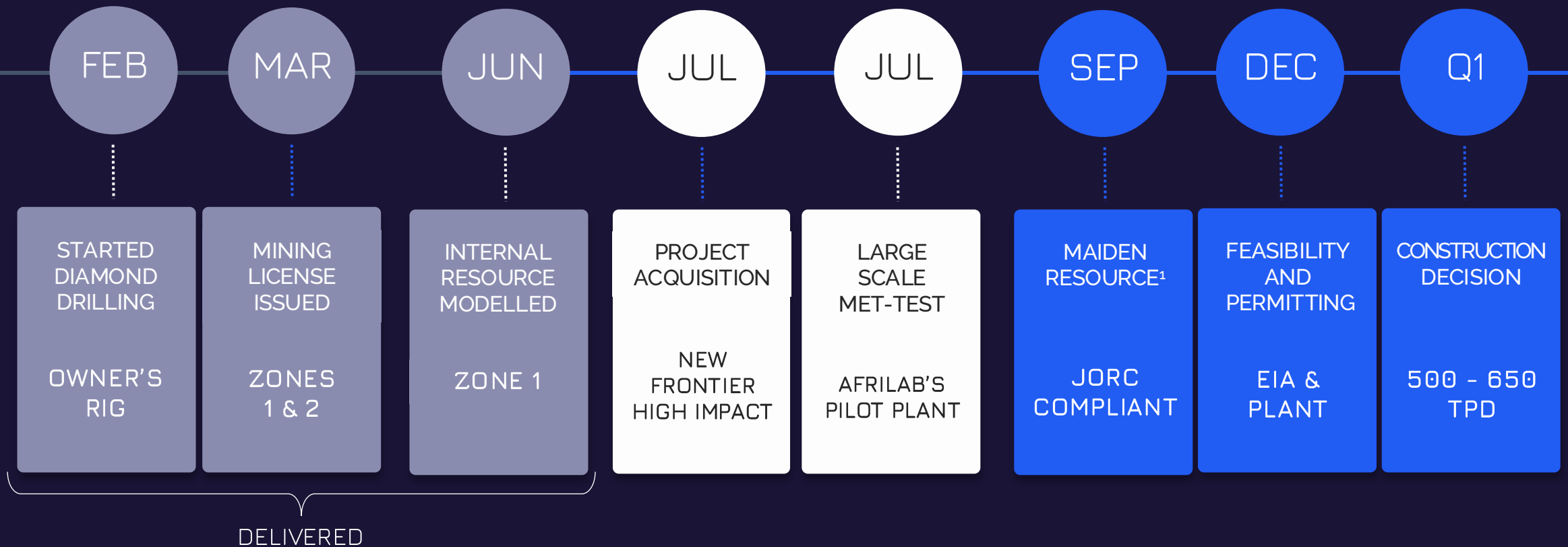
- District scale deposit
- Thus far only drilled 5% of project
- All four zones show sedimentary copper mineralisation over multi kilometre strike lengths
- Mineralisation primarily hosted in sedimentary rocks, however copper rhyolite discovery could change this
- CMR's Exploration Target of 20 to 25 million tonnes has the potential to grow



ACHIEVEMENTS TO DATE

- Internal resource at Zone 1 based on only 7 months of drilling
- Confirmation that Agadir-Melloul is a direct geological analogue of Tizert (130Mt at 0.9% Cu)
- Mineralised rhyolite and gold discovered at Zone 2

2026 WORK PROGRAMME, MILESTONES AND CATALYSTS



¹ size of Maiden Resource Estimate will reflect metres drilled, not the project's global resource potential

EXPLORATION TARGET

300,000 tonnes = c.\$3.0 billion NSR

Net Smelter Revenue

\$13,500/T copper price

300,000 T x 82% recovery x 90% payability

TARGET AREA (km ² of Adoudounian)	% / KM ² MINERALISED		CuEQ GRADE (%)	Potential Resources	Contained copper eq.
50	10%	5.0	1.2%	25MT	300KT
50	15%	7.5	1.2%	38MT	450KT
65	10%	6.5	1.1%	33MT	358KT
65	15%	9.75	1.1%	49MT	536KT
85	10%	8.5	1.0%	43MT	425KT
85	15%	12.75	1.0%	64MT	638KT

NOTE: calculations assume 2.0m thickness and a rock density of 2.5 SG

TIZERT ANALOGUE

55km west of Agadir Melloul

Tizert started life with 1.1Mt at 2.3% Cu and 65 g/t Ag
now 130MT at 0.9% copper + silver credits

Agadir Melloul is starting a similar journey

TIZERT JOURNEY:



FAST-TRACK DEVELOPMENT

600 to 1,000 tpd Initial Mine

- Earning-in to 60% through development of modest scale copper flotation plant
- Production provides path to cashflow within 3.5 years

STRATEGIC RESOURCE

Targeting a large-scale discovery

- Majority of value from Strategic Resource Strategy
- Defining a Tizert analogue
- Initial Exploration Target of 200kt contained copper
- Longer term target of >500kt contained copper

CONTINUED DRILLING



THE CMR VISION

- Morocco is an excellent destination for mining
- It is geologically well endowed with known but underexplored metallogenic belts
- Its mining regulations are favourable to investors
- CMR achieved a substantial first discovery and aims to expand nationally and regionally
- Aiming to accelerate value with production from 2027/28
- Access to additional permits
- Other North African jurisdictions under review
- Ambition to build a mid-tier producer, through organic growth/additional assets.



SHALLOW DRILLING FOR RAPID GROWTH OF COPPER RESOURCES



FEASIBILITY STUDY TO START IMMEDIATELY WITH MINE EISA ALREADY SUBMITTED



FAST-TRACKING MINE DEVELOPMENT USING MOROCCAN EXPERTISE



LOW EXECUTION RISK WITH PROXIMITY TO INFRASTRUCTURE



TOP 15 MINING COUNTRY AND FIRST IN AFRICA



MORE ASSETS TO BE ADDED TO PORTFOLIO

APPENDIX

METALLURGY, COMPARATORS, IGNEOUS UPSIDE

MINERALISED RHYOLITE DISCOVERY

- At surface rhyolite discovery at Zone 2
- Potential for separate copper – silver, igneous discovery
- Some parts of the rhyolite also contain gold
 - BHR6 1.0m at 4.52g/t gold
 - BHR7 1.0m at 2.5g/t gold



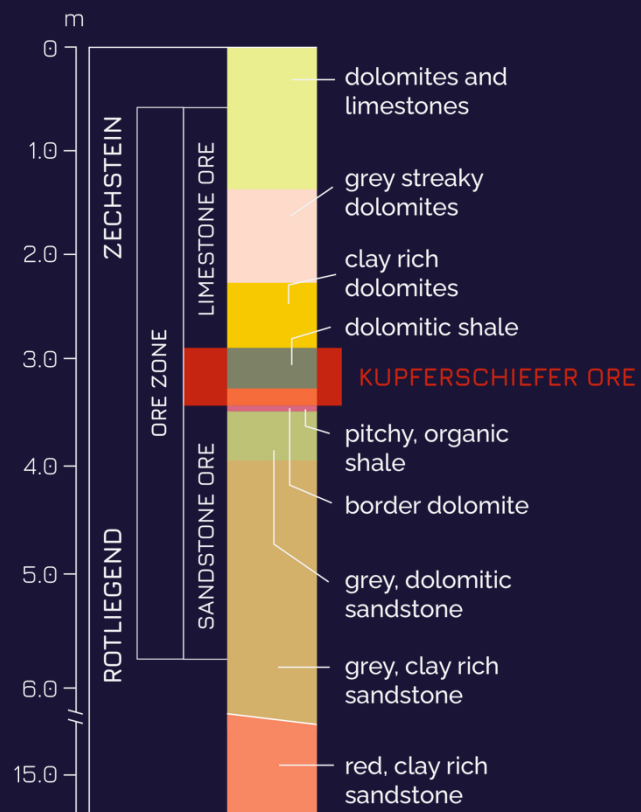
RHYOLITE CORE

6.0m at 1.4% Cu
and 30g/t Ag

10m at 1.1% Cu
and 20g/t Ag

OREBODY THICKNESS ANALOGUES

KUPFERSCHIEFER / LUBIN / KGHM:



Mine	Company	OREBODY WIDTH (m)	CuEq GRADE	GRADE (at 2.0M)	DEPTH (M)
LUBIN	KGHM POLSKA MIEDZ S.A	2.8	1.2%	1.2%	350-1000
MANSFELD	MKM MANSFELD KUPFER	0.5	3.5%	1.0%	0-1000
AGA-MELLOUL	CRITICAL MINERAL RES.	2.0*	1.2%*	1.2%	0-50

* 2.0m and 1.2% CuEq are assumptions used in our initial exploration target. There is good potential at Agadir Melloul for the discovery of a thicker orebody. Grade will depend on cut-off grade assumptions.

METALLURGY

- Testwork undertaken by Afrilab in Marrakesh (SGS Certified)
- Mineralogy and Metallurgy typical of West Anti-Atlas
- Sulphide to oxide ratio of approx. 80:20
- Copper and silver sulphides must be recovered at the head of the circuit without sulphidation; oxidized copper is then recovered by staged sulphidation
- Best flotation results (test no. 9)
 - I. 80.1% copper recovery – not optimised
 - II. 61.25% silver recovery
- No. 9 concentrate assay:
 - I. 26.97% copper
 - II. 72g/t silver



CONTACT

CEO

Charlie Long

charlie.long@cmrplc.com

REGISTERED OFFICE

Eccleston Yards

25 Eccleston Place

London

SW1W 9NF